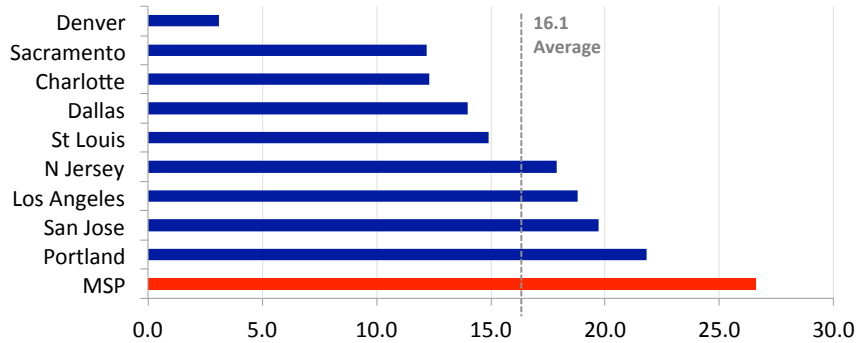
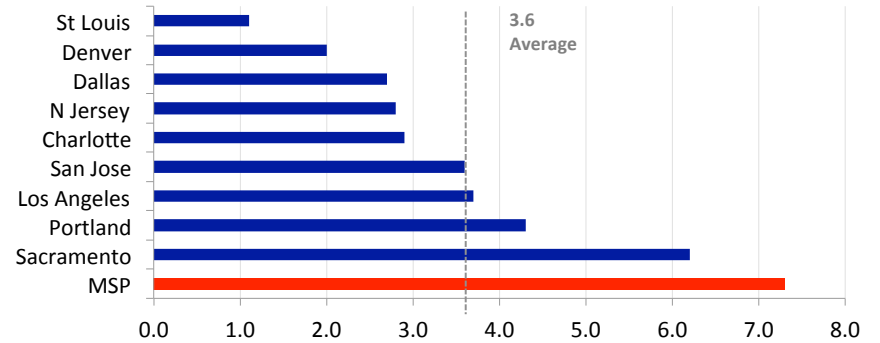


Since the 2014 launch of the Green Line, Metro Transit (i.e. the Met Council) has consistently been the **LEAST SAFE** of peer\* LRT systems.

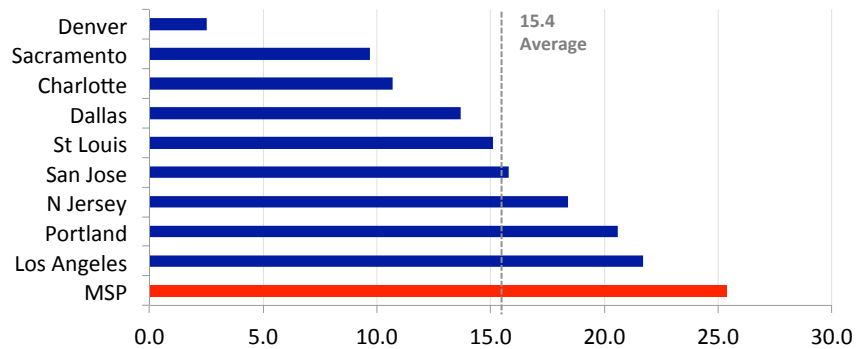
Average LRT EVENTS per Million Train Revenue Miles, 2014-2018



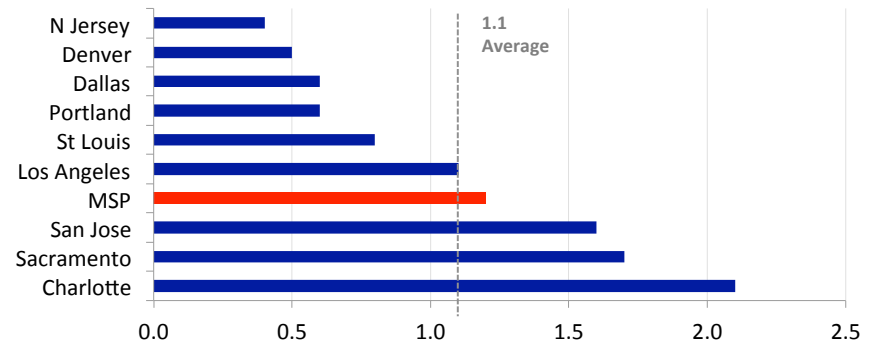
Average LRT COLLISIONS per Million Train Revenue Miles, 2014-2018



Average LRT INJURIES per Million Train Revenue Miles, 2014-2018



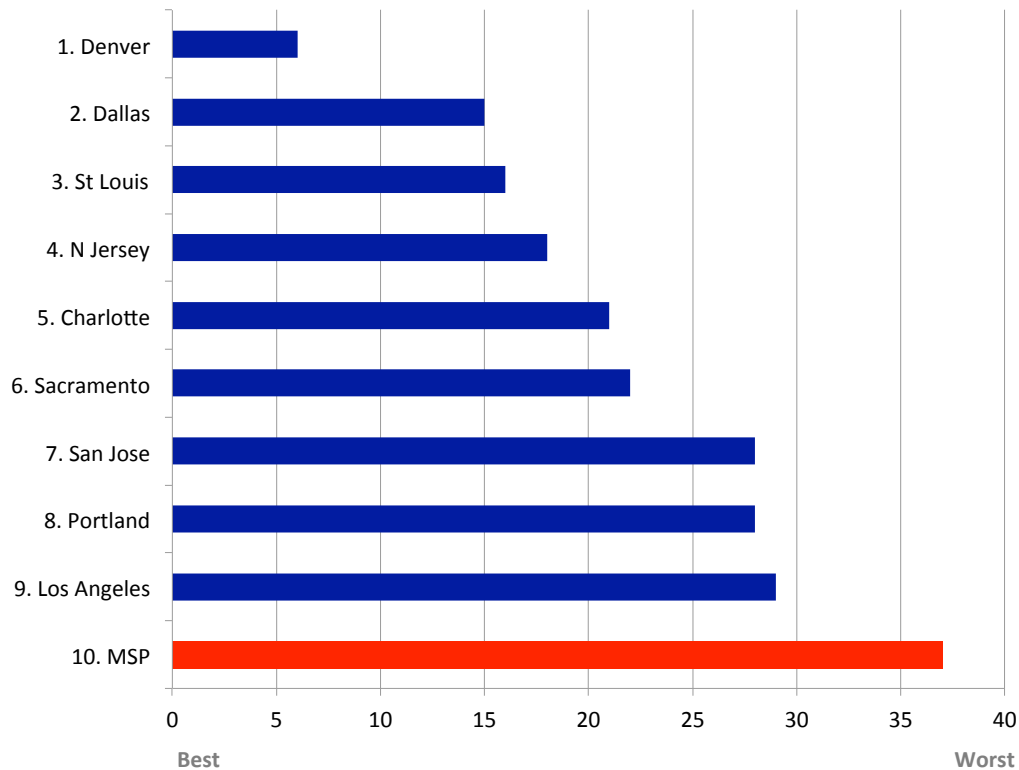
Average LRT FATALITIES per Million Train Revenue Miles, 2014-2018



\*The Met Council defined this peer group of LRT systems: *Light-rail supporters relieved to see transit funding in federal spending plan*, Star Tribune, March 23, 2018  
**SOURCE:** National Transportation Database. 2018 data available through September as of January 2019, and is extrapolated to 12 months as part of the overall average

Since the 2014 launch of the Green Line, Metro Transit (i.e. the Met Council) ranks dead last in LRT safety. Its score of 37 out of 40 is just 3 points short of the worst possible score in comparison to its self-selected peers.

Peer Light Rail Systems: Sum of Rankings for All Types of Safety Issues, 2014-2018



Peer Light Rail System Rank, Overall & by Type of Safety Concern, 2014-2018

Rank / City	Collisions	Events	Injuries	Fatalities	Total
1. Denver	2	1	1	2	6
2. Dallas	3	4	4	4	15
4. St Louis	1	5	5	5	16
4. New Jersey	4	6	7	1	18
5. Charlotte	5	3	3	10	21
6. Sacramento	9	2	2	9	22
7(t). Portland	8	9	8	3	28
7(t). San Jose	6	8	6	8	28
9. Los Angeles	7	7	9	6	29
10. MSP	10	10	10	7	37

\*The Met Council defined this peer group of LRT systems: *Light-rail supporters relieved to see transit funding in federal spending plan*, Star Tribune, March 23, 2018  
 SOURCE: National Transportation Database. 2018 data available through September as of January 2019, and is extrapolated to 12 months as part of the overall average